

How to *Update an Expired eKEY*[®]

— Update Automatically —

Android[™]
Apple[®]

1. Open the app

Note: An active cellular or Wi-Fi[®] data connection is required.

1. Open the Supra TRACcess eKEY app and eKEY will attempt to update.

2. Enable **Automatic Update** in **Settings** (enabled by default) and eKEY will attempt to update overnight.

Note: Some Apple devices will only update overnight if the TRACcess eKEY app is a frequently used app.

3. Select **Update Key** then **Wireless Update**, and eKEY will attempt to update.

4. Select **Update Key** then **Emergency Update Code**, then enter your code.

Note: The number of emergency update codes (EUCs) that can be consecutively requested is limited by your TRACcess administrator. If your limit is reached, you must use a cellular or Wi-Fi data connection to update your Supra TRACcess eKEY app and reset your EUC limit.



How to *Update an Expired eKEY*[®]

— Update Automatically —

Android

Apple

1. Open the Supra TRACcess eKEY app and eKEY will attempt to update.

2. Enable **Automatic Update** in **Settings** (enabled by default) and eKEY will attempt to update overnight.

Note: Some Apple devices will only update overnight if the TRACcess eKEY app is a frequently used app.

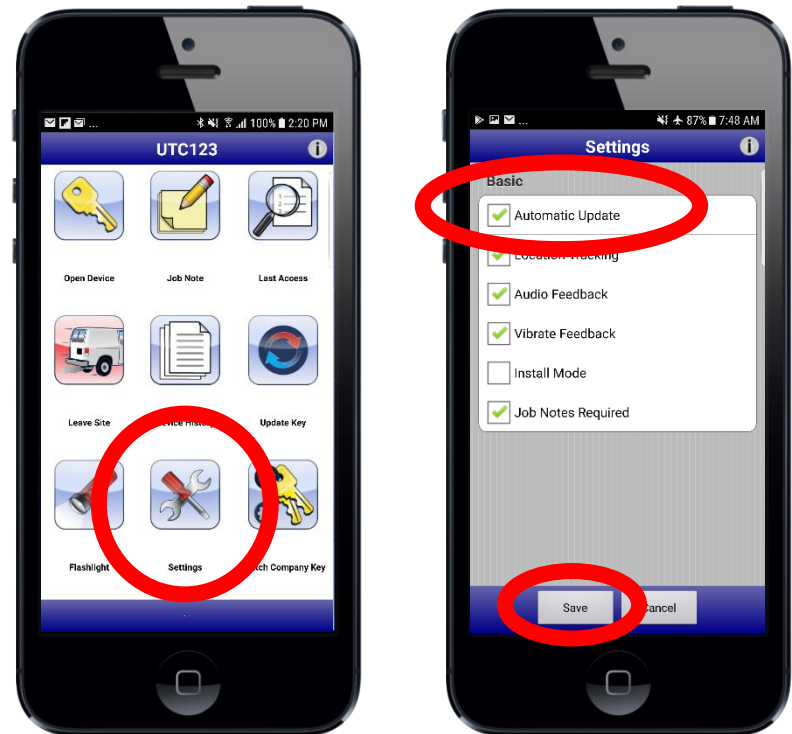
3. Select **Update Key** then **Wireless Update**, and eKEY will attempt to update.

4. Select **Update Key** then **Emergency Update Code**, then enter your code.

Note: The number of emergency update codes (EUCs) that can be consecutively requested is limited by your TRACcess administrator. If your limit is reached, you must use a cellular or Wi-Fi data connection to update your Supra TRACcess eKEY app and reset your EUC limit.

2. Enable Automatic Update

Note: An active cellular or Wi-Fi data connection is required.



How to *Update an Expired eKEY*[®]

— Update Manually —

Android

Apple

3. Select **Update Key** then **Wireless Update**

Note: An active cellular or Wi-Fi data connection is required.

1. Open the Supra TRACcess eKEY app and eKEY will attempt to update.

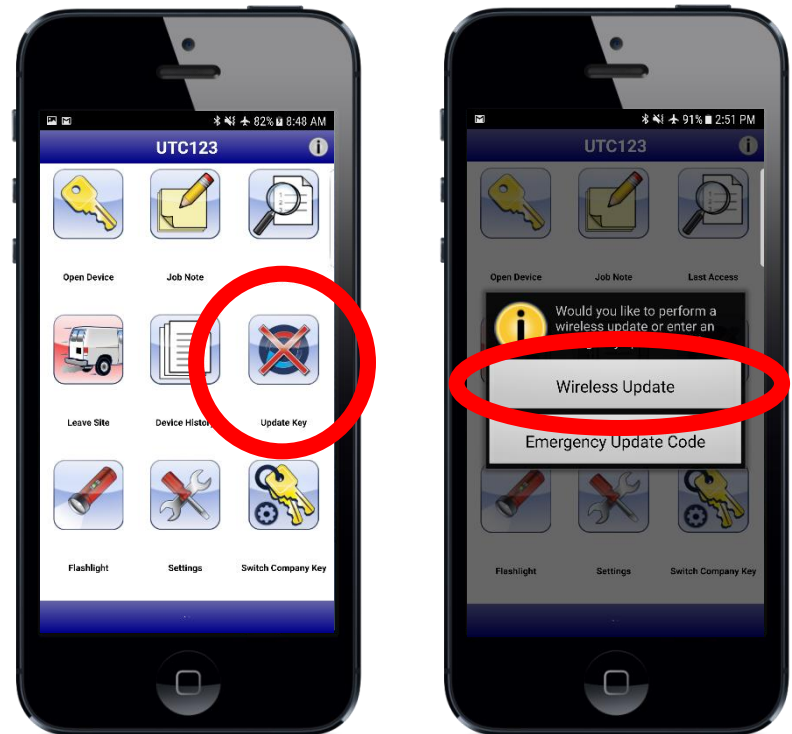
2. Enable **Automatic Update** in **Settings** (enabled by default) and eKEY will attempt to update overnight.

Note: Some Apple devices will only update overnight if the TRACcess eKEY app is a frequently used app.

3. Select **Update Key** then **Wireless Update**, and eKEY will attempt to update.

4. Select **Update Key** then **Emergency Update Code**, then enter your code.

Note: The number of emergency update codes (EUCs) that can be consecutively requested is limited by your TRACcess administrator. If your limit is reached, you must use a cellular or Wi-Fi data connection to update your Supra TRACcess eKEY app and reset your EUC limit.



How to *Update an Expired eKEY*[®]

— Update by Emergency Update Code —

Android Apple

1. Open the Supra TRACcess eKEY app and eKEY will attempt to update.

2. Enable **Automatic Update** in **Settings** (enabled by default) and eKEY will attempt to update overnight.

Note: Some Apple devices will only update overnight if the TRACcess eKEY app is a frequently used app.

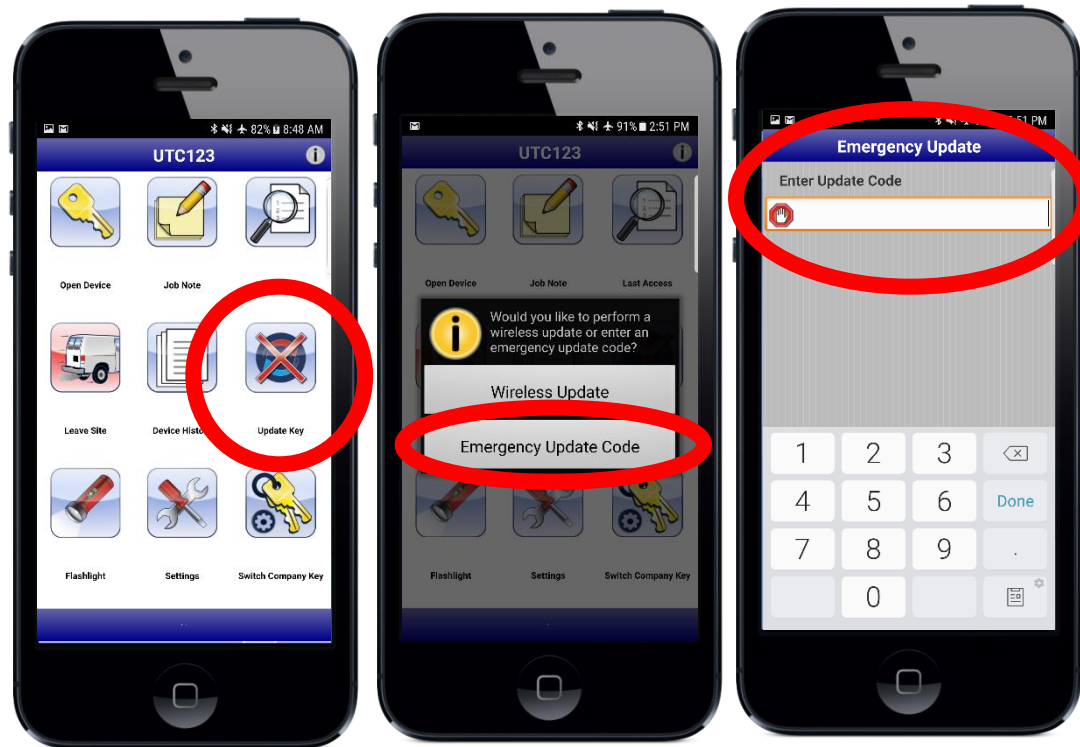
3. Select **Update Key** then **Wireless Update**, and eKEY will attempt to update.

4. Select **Update Key** then **Emergency Update Code**, then enter your code.

Note: The number of emergency update codes (EUCs) that can be consecutively requested is limited by your TRACcess administrator. If your limit is reached, you must use a cellular or Wi-Fi data connection to update your Supra TRACcess eKEY app and reset your EUC limit.

3. Select **Update Key** then **Emergency Update Code**, then enter your code

Note: Active keyholders can contact their TRACcess administrator for an emergency update code.



For the latest information, visit us at
www.tracessmanager.com.

Select **Downloads and Resources** for instructional videos,
How-To's, and more.



©2018 United Technologies Corporation. All rights reserved. Supra® and TRACcess® are registered trademarks of United Technologies Corporation. iPhone® is a registered trademark of Apple, Inc. Android™ is a trademark of Google, LLC. Bluetooth® is a registered trademark of Bluetooth SIG. Wi-Fi® is a registered trademark of Wi-Fi Alliance. IOS® is a registered trademark of Cisco Systems, Inc. Other trade names used in this document may be trademarks or registered trademarks of the manufacturers or vendors of the respective products.

